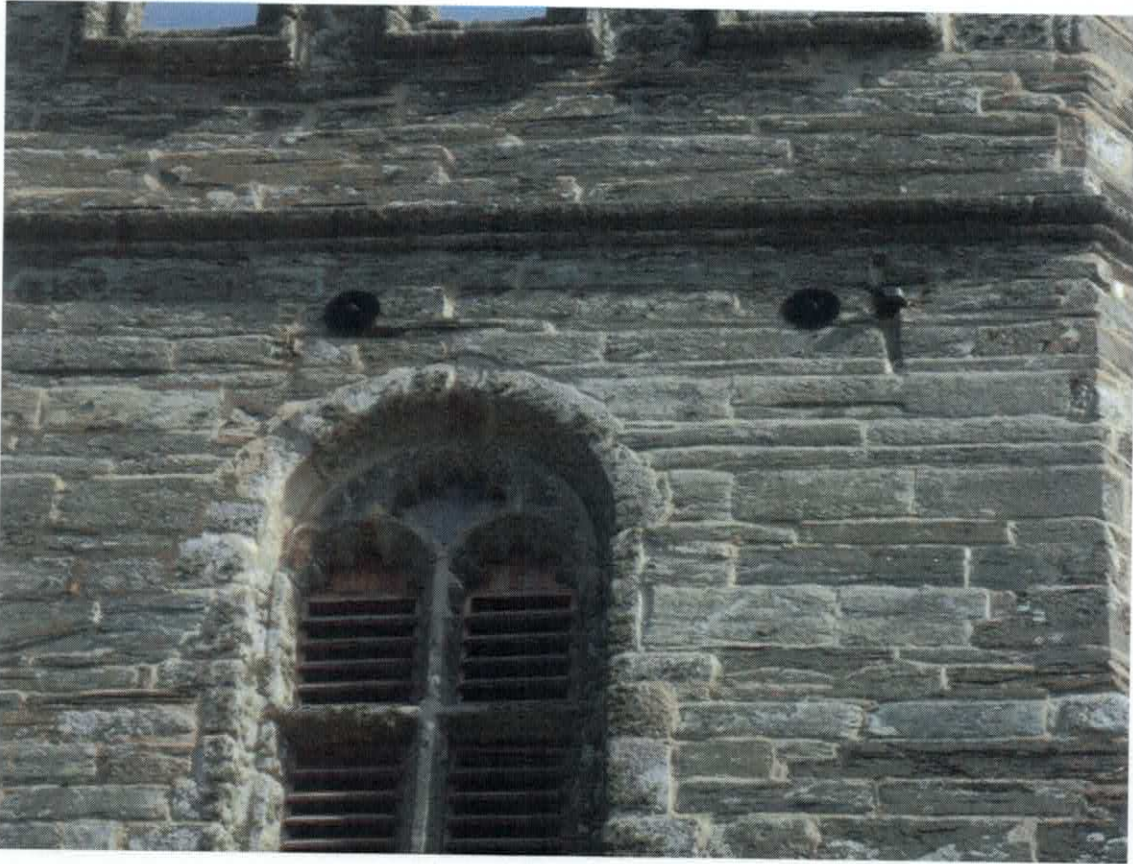


EAST BELL CHAMBER WALL EXTERNAL VIEW



EAST BELL CHAMBER WALL INTERNAL VIEW



WEST BELL CHAMBER WALL EXTERNAL VIEW



WEST BELL CHAMBER WALL INTERNAL VIEW



NEW BRACKET TO WEST END OF NORTHERN TIE BEAM



NEW BRACKET TO WEST END OF SOUTHERN TIE BEAM



OLD ROTTEN BLOCK (SECTION OF TREE TRUNK) TO EAST END OF SOUTHERN TIE BEAM.



NEW OAK BLOCK, MADE TO FULLY SUPPORT THE EASTERN ROOF BEAM FROM THE EAST END OF THE SOUTHERN TIE BEAM.



NEW OAK BLOCK MADE TO SUPPORT THE NORTHERN END OF THE EASTERN ROOF BEAM FROM THE EAST END OF THE NORTHERN TIE BEAM. THERE WAS NO BLOCK HERE BEFORE WORKS STARTED. THE YEAR 2016 HAS BEEN CARVED INTO THE SOUTHERN SIDE OF THIS BLOCK.

THE BELL CHAMBER AFTER RUBBLE REMOVAL AND CLEANING



SOUTH BELL CHAMBER WINDOW LEDGE BEFORE FIRST PHASE



SOUTH BELL CHAMBER WINDOW LEDGE AFTER RUBBLE REMOVAL AND CLEANING DURING FIRST PHASE – 6 WHEELBARROW LOADS OF RUBBLE, DUST AND BIRDS NESTS WERE REMOVED FROM THE BELL CHAMBER, LARGELY FROM AROUND THE EDGES OF THE BELL FRAME BUT ALSO FROM THE TOPS OF THE WALLS



PEARSON LUBBOCK ARCHITECTS
BELL CHAMBER OPENINGS BEFORE AND AFTER FIRST PHASE



NORTH BELL CHAMBER OPENING BEFORE REPAIR

ST WINNOW CHURCH TOWER FIRST PHASE



NORTH BELL CHAMBER OPENING AFTER REPAIR

PEARSON LUBBOCK ARCHITECTS
BELL CHAMBER OPENINGS BEFORE AND AFTER FIRST PHASE



SOUTH BELL CHAMBER OPENING BEFORE REPAIR

ST WINNOW CHURCH TOWER FIRST PHASE



SOUTH BELL CHAMBER OPENING AFTER REPAIR

PEARSON LUBBOCK ARCHITECTS

BELL CHAMBER OPENINGS BEFORE AND AFTER FIRST PHASE



WEST BELL CHAMBER OPENING BEFORE REPAIR

ST WINNOW CHURCH TOWER FIRST PHASE



WEST BELL CHAMBER OPENING AFTER REPAIR

5TH OCTOBER 2016

PEARSON LUBBOCK ARCHITECTS
BELL CHAMBER OPENINGS BEFORE AND AFTER FIRST PHASE



EAST BELL CHAMBER OPENING BEFORE REPAIR

ST WINNOW CHURCH TOWER FIRST PHASE



EAST BELL CHAMBER OPENING AFTER REPAIR



BELL CHAMBER WEST WALL BEFORE REPAIR

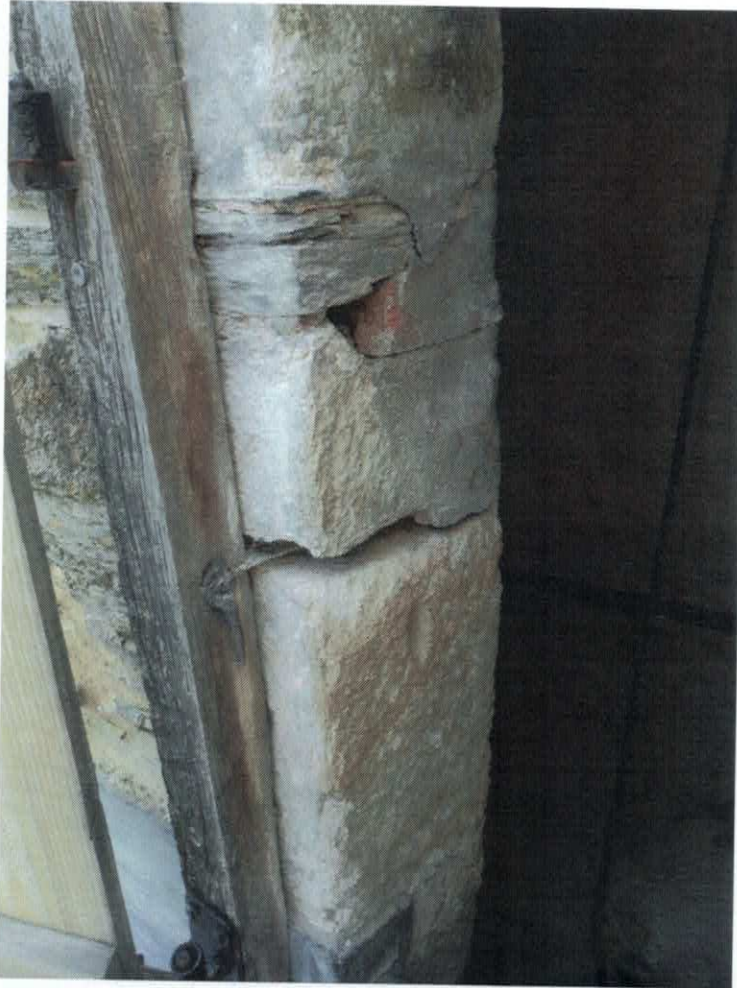


BELL CHAMBER WEST WALL AFTER REPAIR

PEARSON LUBBOCK ARCHITECTS
BELL CHAMBER OPENINGS



ST WINNOW CHURCH TOWER FIRST PHASE



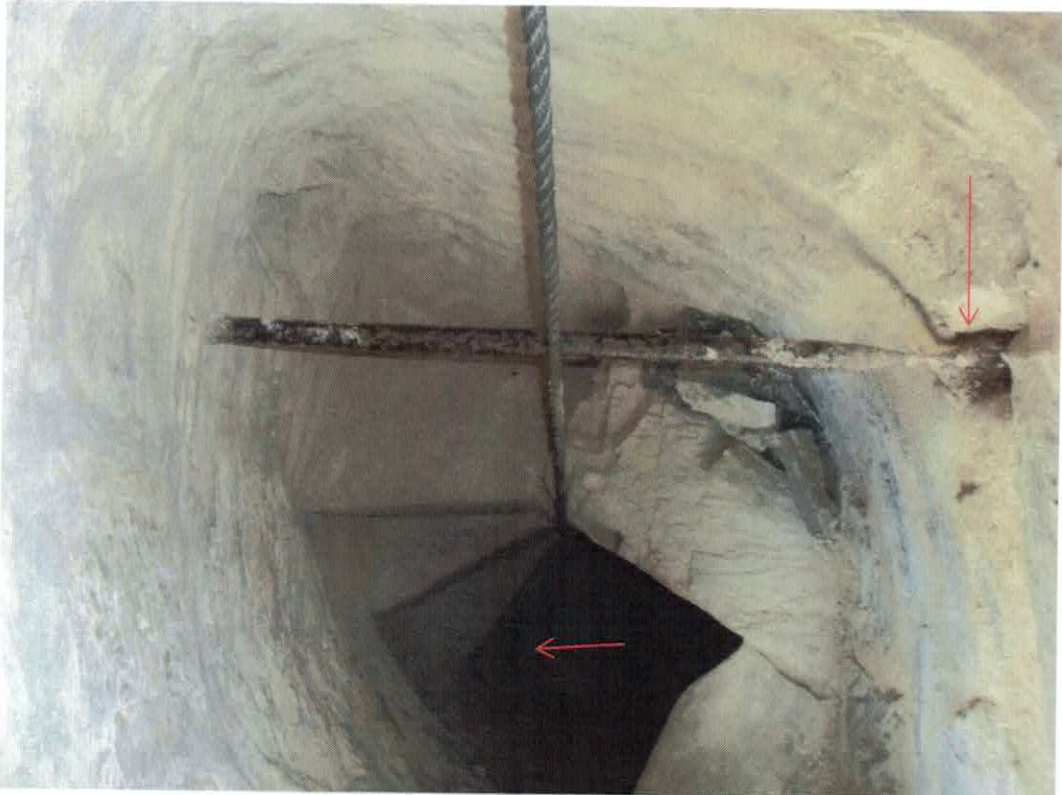
NEW HINGE POST REQUIRED TO
ROOF DOOR, REBED STONework
WHICH HAS BECOME LOOSE
BECAUSE OF HINGE POST FIXINGS,
REFIX NEW HINGE POST IN NEW
LOCATION WITH NEW FIXINGS.



SILL SLOPE TO WEST TOWER WINDOW, RENDER IS CRACKING AND COMING AWAY FROM
STONework AND STONES UNDERNEATH ARE LOOSE.



OAK PAD TO BOLT TO NAVE ROOF, EXISTING PAD IS ROTTEN AND HAS WOODWORM.



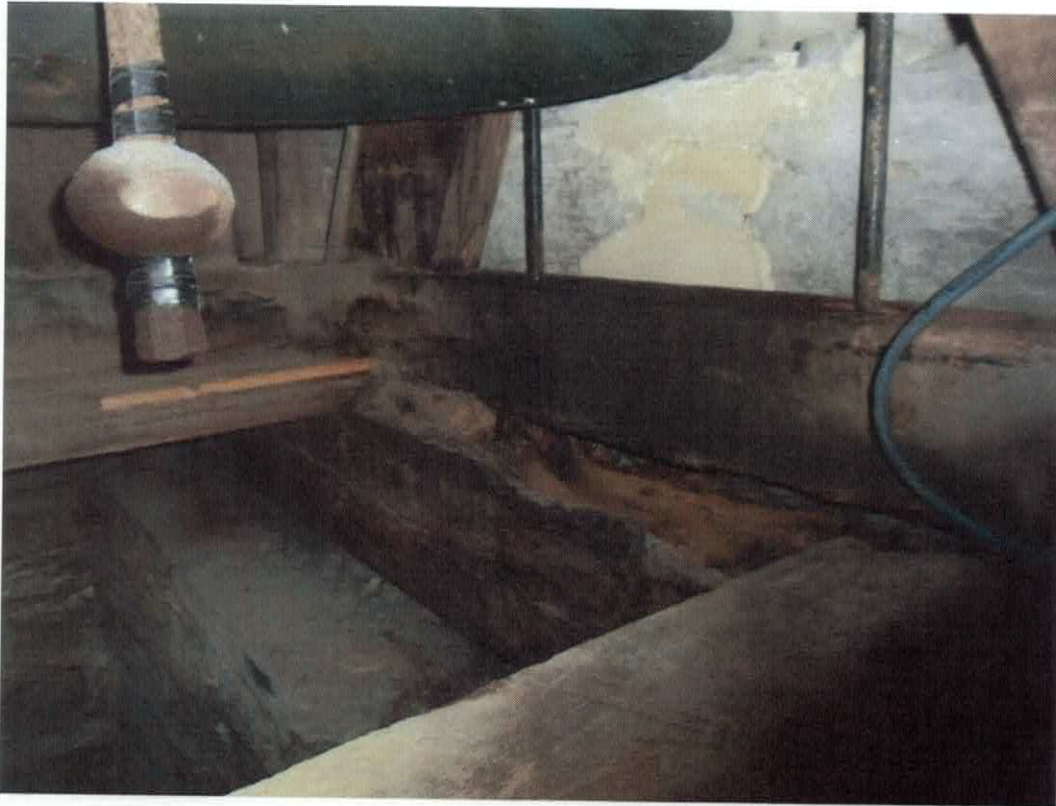
STAINLESS STEEL PLATE REPAIR TO TOWER STEP, NORTH/SOUTH TIE BAR HAS CORRODED WHERE IT ENTERS THE NORTH WALL.



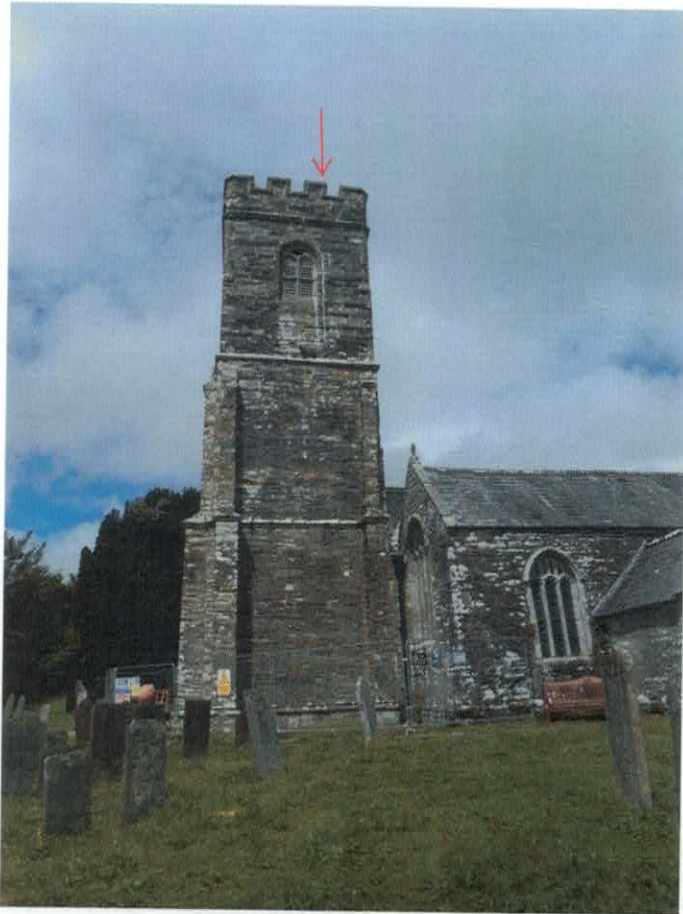
ROTTEN BOARDS WHICH FORMED THE HATCH UNDER THE TENOR BELL, NORTH SIDE WERE ROTTEN AND SOUTH SIDE ONLY JUST RESTING ON A ROUNDED BEM EDGE.



ROTTED SOUTH BEAM TO BELL CHAMBER FLOOR AND BOTTOM RAIL OF BELL FRAME.

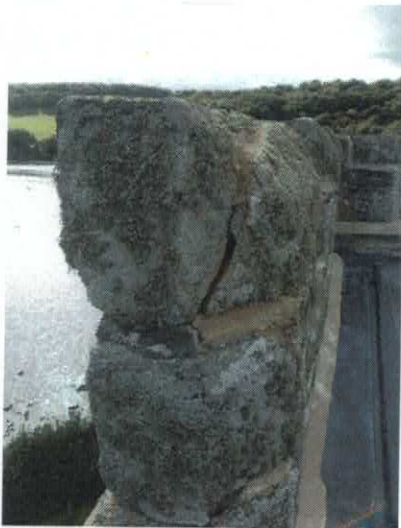


A SECTION OF THE BEAM 5 FOOT LONG BY UP TO 6 INCHES DEEP IS ROTTEN, THE BEAM IS 13 FEET BY 10⁵/₈ INCHES BY 8" INCHES, THE BEAM IS ALSO ROTTEN AND SOFT AT ITS WEST END.



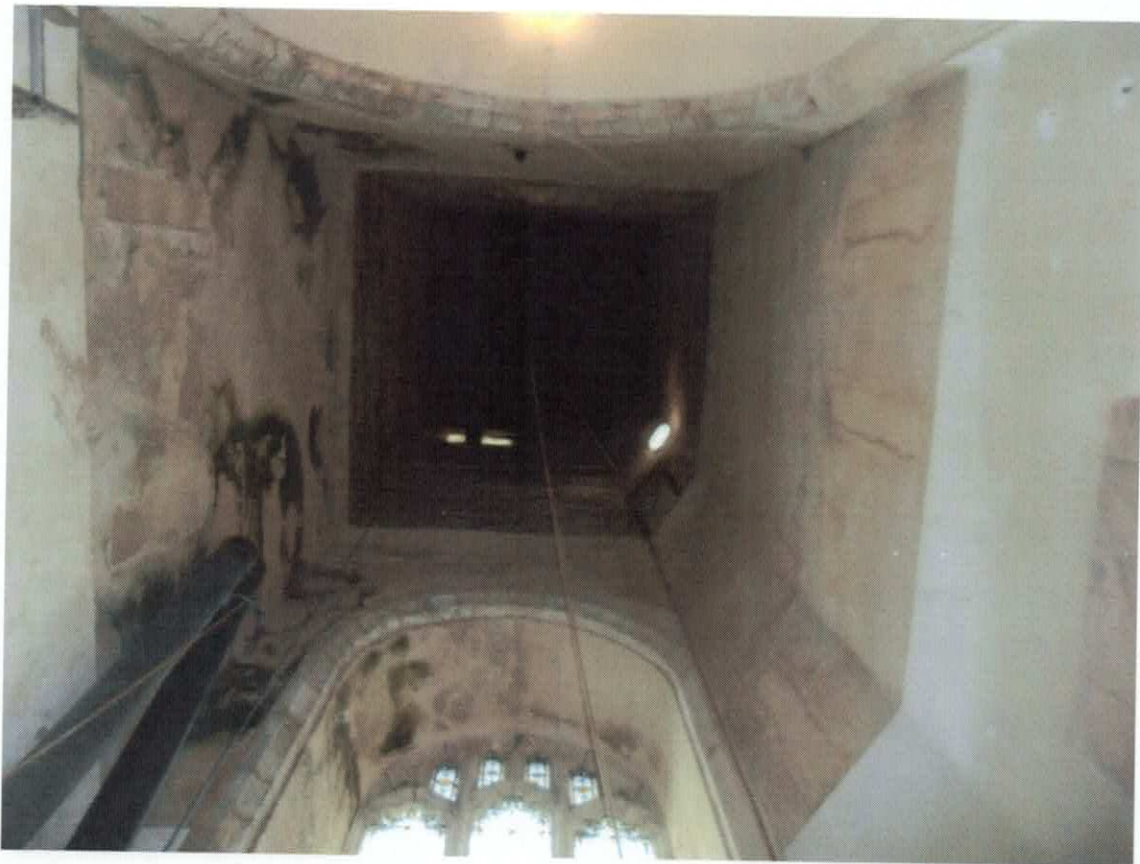
A MERLON CAPSTONE TO THE SOUTH PARAPET WALL OF THE TOWER ROOF (940X250X260MM) HAS CRACKED VERTICALLY DOWN ITS LENGTH.

IF RAINWATER GETS INTO THE CRACK AND FREEZES THE OUTER PIECE COULD FALL INTO THE CREMATED REMAINS AREA AT THE BASE OF THE SOUTH SIDE OF THE TOWER.





LOOKING UP INSIDE THE TOWER TO LOWER CHAMBER FLOOR BEFORE THE REMOVAL OF THE ROTTEN FLOOR.



LOOKING UP INSIDE THE TOWER TO THE BELL CHAMBER FLOOR AFTER REMOVAL OF THE ROTTEN FLOOR



LOOKING INTO THE LOWER CHAMBER
FROM THE STAIR DOORWAY BEFORE
REMOVAL OF THE ROTTEN FLOOR



LOOKING INTO THE LOWER CHAMBER SPACE FROM THE STAIR DOORWAY AFTER REMOVAL OF THE
ROTTEN FLOOR



WEST DOOR
EXTERNAL



WEST DOOR
INTERNAL



DOOR TO
TOWER STAIRS
OUTER LAYER
REMOVED,
ORIGINAL
DOOR
RESTORED AND
REHUNG





STAIR WINDOW AND CRACKED LINTEL BEFORE REPAIR



STAIR WINDOW AND CRACKED LINTEL AFTER REPAIR

