



SCAFFOLD BEHIND THE ORGAN TO REPAIR THE ARCH AND REMOVE THE CEMENT RENDER



THE ELECTRICALS MOVED AND UPDATED THE ELECTRICAL PANEL FROM THE TOWER TO A NEW CUPBOARD AT THE WEST END OF THE NAVE



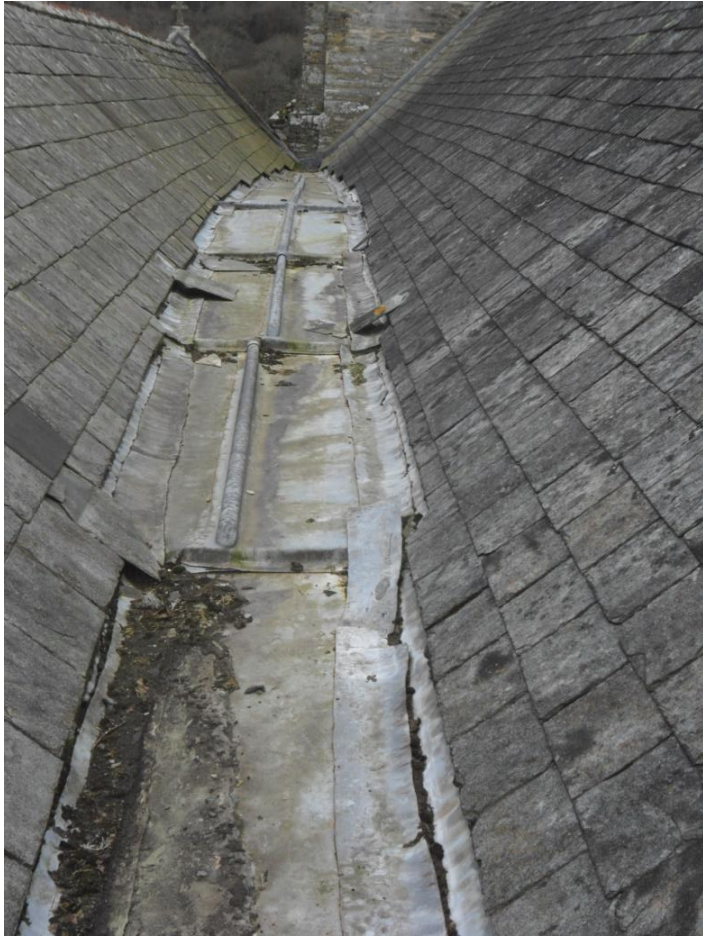
ELECTRICIANS WORKING IN THE AVE



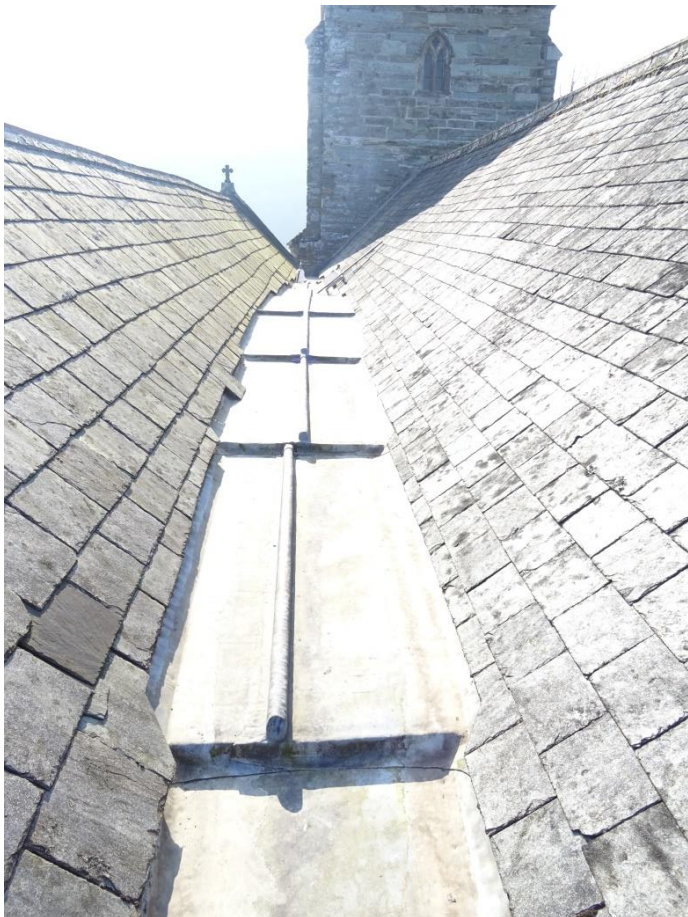
DIGGING THE NEW DRAINS TO THE NORTH AND SOUTH SIDE OF THE TOWER REVEALED THE BEDROCK ON WHICH THE TOWER WAS BUILT



DRAINS NOW FILLED WITH GRAVEL & SURFACED WITH LIME STONE



VALLEY GULLY BETWEEN NAVE AND
SOUTH AISLE ROOFS BEFORE AND
AFTER CLEANING





JUNCTION BETWEEN NAVE ROOF AND TOWER REPAIRED & LEAD RE-DRESSED



VIEW OF VALLEY FROM TOWER ROOF



STEP TO OLD BELL CHAMBER FROM TOWER STAIR REPAIRED WITH NEW STONE





DOOR PINTLE DAMAGE



AFTER REPAIR



KEY STONES TO TOWER WEST DOOR ARCH HAD DROPPED





TOWER WEST DOOR ARCH DURING REPAIR





SILL & ARCH AFTER REPAIR



RAINWATER DRAINE FROM TOWER – BLOCKED AND BROKEN CLAY PIPES
SETTLED TO IN AN UNEVEN FALL





SCAFFOLDING IN THE MID CHAMBER DURING PHASE TWO



VIEW DOWN THROUGH THE SCAFFOLDING